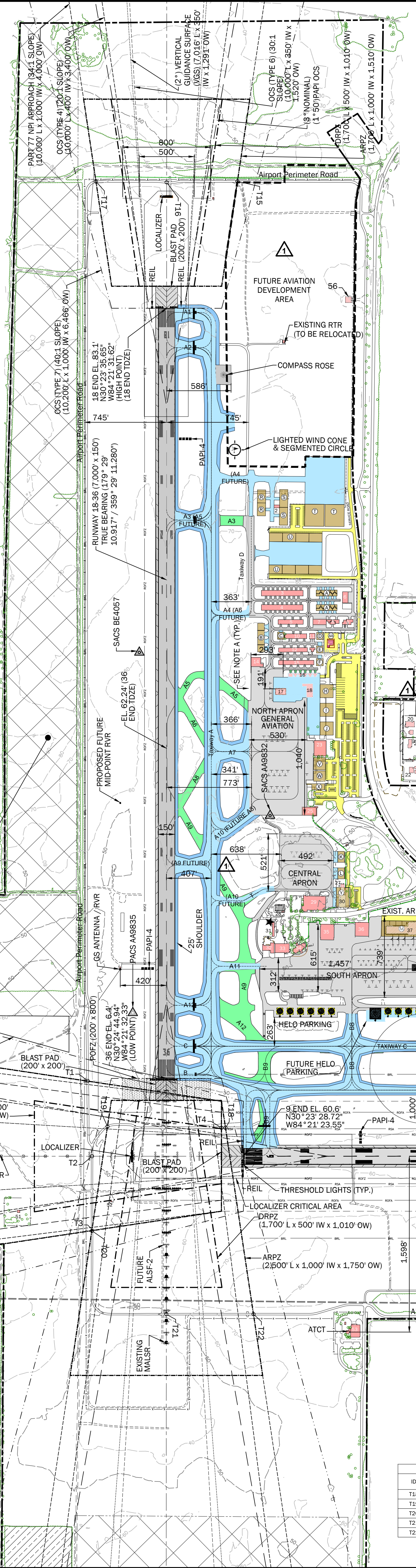
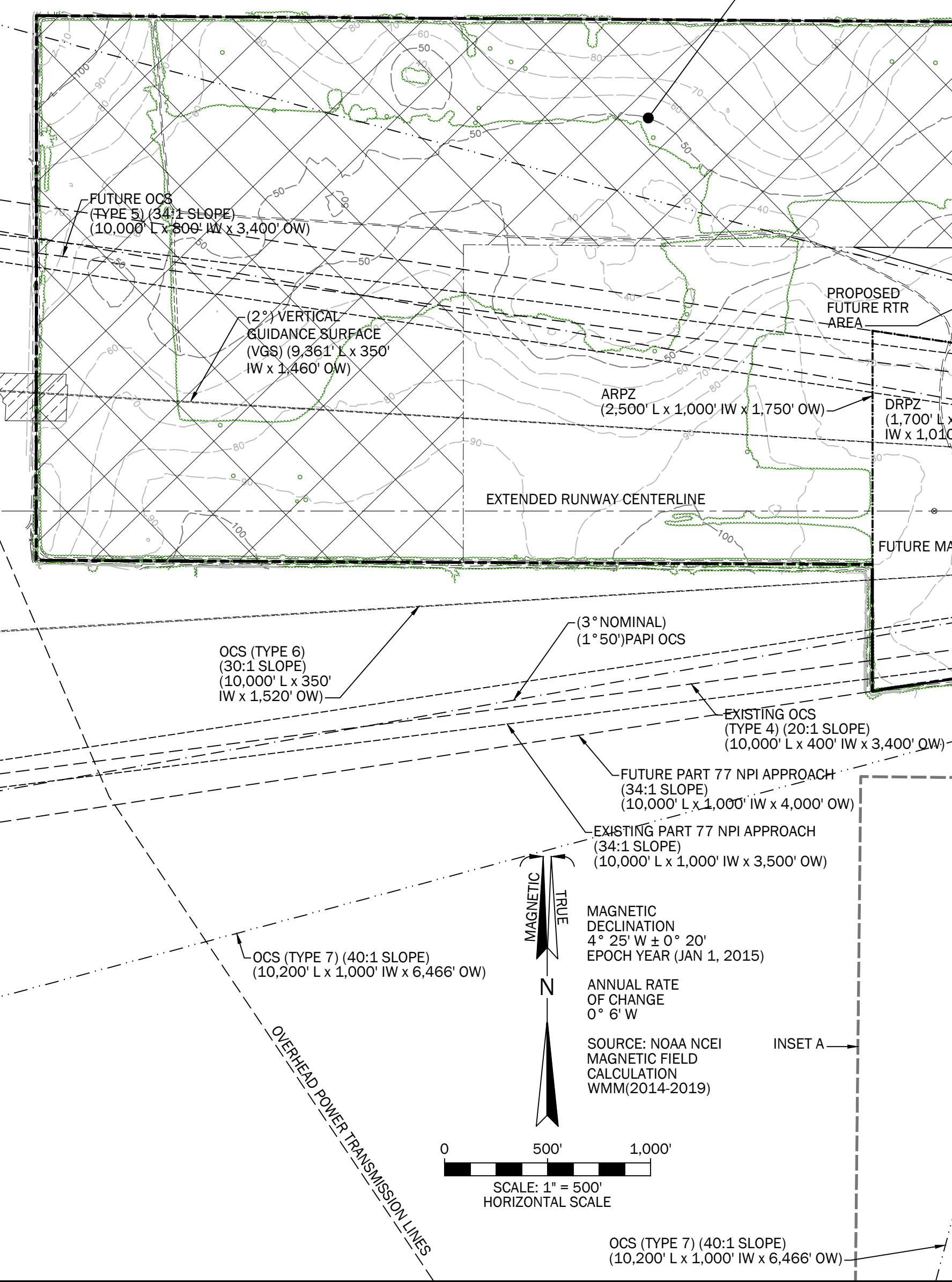
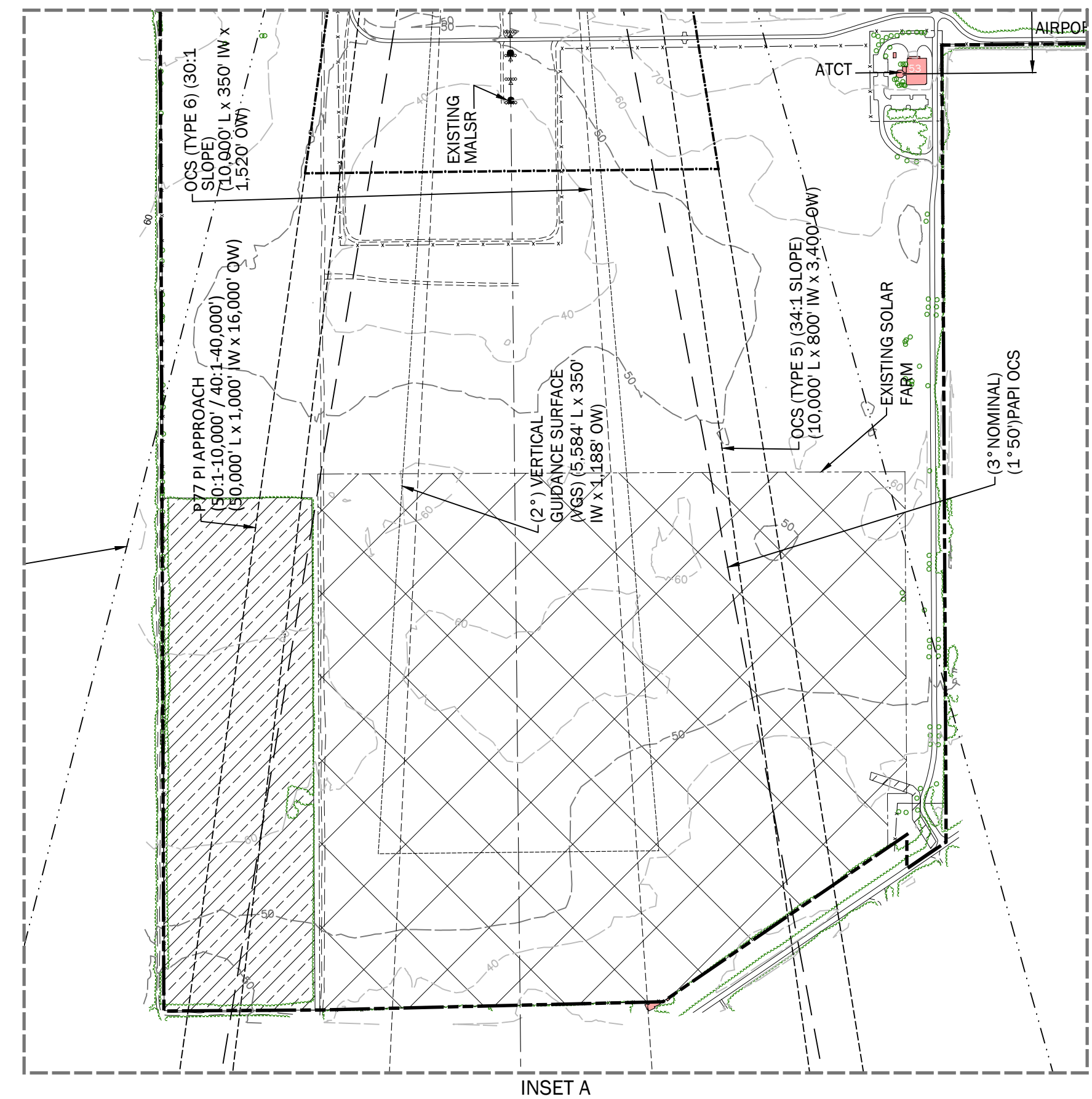


DRAFT

02/01/2023 10:20:18 AM

DESCRIPTION	LEGEND	
	EXISTING	FUTURE
PROPERTY LINE	---	---
BUILDINGS	█	█
FULL-STRENGTH PAVEMENT	█	█
SHOULDERS	█	█
ROAD / PARKING	█	█
RUNWAY MARKINGS	█	█
STREAMS / WATER BODIES	█	N/A
RSA	---	---
ROFA	---	---
OPZ	---	---
BRL	---	SAME
TSA	---	SAME
BRL	---	SAME
NAVAIDS / LIGHTING	---	---
FENCE (10' HIGH)	---	---
AIRPORT BEACON	★	★
PAVEMENT REMOVAL	N/A	---
EASEMENT	---	---
BUILDING REMOVAL / RELOCATION	N/A	---
VEGETATION	---	---

FAA APPROVAL STAMP



EXISTING BUILDING TABLE					
ID	DESCRIPTION	TOP EL.	ID	DESCRIPTION	TOP EL.
1	RTR	82.2	31	ELECTRICAL VAULT	61.7
2	FORMER ASR EQUIPMENT BUILDING	80.3	32	GSE MAINTENANCE	70.6
3	THANGARS (17 UNITS)	79.0	33	ARFF	61.2
4	THANGARS (17 UNITS)	78.2	34	GA TERMINAL	97.3
5	THANGARS (6 UNITS)	82.4	35	MILLION AIR	83.8
6	CORPORATE HANGAR	91.2	36	MILLION AIR	85.0
7	CORPORATE HANGAR	85.3	37	STATE OF FLORIDA HANGAR (FUTURE REMOVAL)	83.9
8	THANGARS (3 UNITS)	78.1	38	STATE OF FLORIDA FORESTRY SERVICE (FUTURE REMOVAL)	85.4
9	THANGARS (2 UNITS)	80.1	39	SHERIFFS HANGAR	81.4
10	THANGARS (5 UNITS)	81.8	40	LOW LEVEL WINDSHEAR ALERT SYSTEM TOWER	168.8
11	CORPORATE HANGAR	82.2	41	LIVELY	86.3
12	THANGARS (8 UNITS)	79.5	42	LIVELY	73.4
13	THANGARS (1 UNITS)	75.6	43	PARKING TOLL BOOTH	80.3
14	UNITED STATES FOREST SERVICE	96.7	44	TERMINAL BUILDING	115.9
15	THANGARS (12 UNITS)	79.0	45	COOLING TOWERS	74.4
16	THANGARS (6 UNITS) (FUTURE REMOVAL)	76.0	46	FEDEX	85.0
17	CORPORATE HANGAR (FUTURE REMOVAL)	90.2	47	AIR CARGO FACILITY	82.1
18	NORTH CARGO BUILDING (FUTURE REMOVAL)	83.2	48	AIRPORT MAINTENANCE COMPLEX	80.9
19	CELL PHONE TOWER	77.3	49	NATIONAL WEATHER SERVICE (FUTURE REMOVAL)	75.3
20	HERTZ FACILITY (FUTURE REMOVAL)	80.4	50	NATIONAL WEATHER SERVICE	71.0
21	NATIONAL FACILITY (FUTURE REMOVAL)	76.9	51	STORAGE BARN	74.3
22	AVIS FACILITY (FUTURE REMOVAL)	79.4	52	FAA FACILITY MAJOR POWER CONTROL SHACK	64.1
23	CORPORATE HANGAR	101.9	53	FAA VICT CONTROL	104.7
24	COMPASS POINT	86.0	54	AIRPORT SURVEILLANCE RADAR	85.3
25	FLIGHTLINE	89.2	55	FAA FACILITY ALP-2 POWER SUPPLY	65.7
26	SEWER PUMPING STATION	54.1	56	STORAGE BUILDING (FUTURE REMOVAL)	70.2
27	CIVIL AIR PARKING (FUTURE REMOVAL)	61.4			
28	FUEL FARM	67.2			
29	FLIGHTLINE	90.4			
30	FLIGHTLINE (FUTURE REMOVAL)	74.8			

FUTURE BUILDING TABLE					
ID	DESCRIPTION	TOP EL. (MSL)	ID	DESCRIPTION	TOP EL. (MSL)
A	8 UNIT HANGARS (2)	88.4	0	CARGO FACILITIES 120'X260'	94.0
B	HANGAR 62'X65'	88.4	P	CARGO FACILITIES 120'X260'	81.0
C	HANGAR 62'X65'	92.5	Q	CARGO FACILITIES 120'X260'	76.0
D	HANGAR 62'X65'	92.5	R	HANGARS 75'X120' (2)	98.8
E	HANGAR 62'X65'	92.5	S	HANGARS 75'X120' (2)	102.0
F	HANGAR 62'X65'	92.5	T	MFG 170'X260'	100.0
G	EQUIPMENT SHELTER	74.0	U	HANGARS 80'X120' (6)	93.0
H	HANGAR 120'X120'	88.0	V	HANGAR 105'X115'	101.0
I	HANGAR 120'X120'	99.0	W	HANGAR 95'X109'	101.0
J	HANGAR 120'X120'	100.0	X	TBD 95'X115'	96.0
K	HANGAR 60'X100'	74.0	Y	HANGAR/MAINT. ADMIN. 120'X180'	90.0
L	HANGAR 60'X100'	78.0	Z	STORAGE 50'X55'	80.0
M	REPLACEMENT BULK HANGAR 140'X386'	89.0	AA	FUEL FARM	N/A
N	MULTI-AGENCY FACILITY 170'X272'	100.0			

RUNWAY 9 END TRAVERSE WAY TABLE					
ID	DESCRIPTION	OBJECT TOP ELEVATION (MSL)	ALLOWABLE SURFACE ELEVATION (MSL)	PENETRATION	DISPOSITION
T1	PRIVATE ROAD	55.2	96.6	-41.4'	TBD
T2	PRIVATE ROAD	63.4	95.5	-32.1'	TBD
T3	PRIVATE ROAD	66.9	95.9	-28.9'	TBD
T4	PRIVATE ROAD	62.7	60.6	2.1'	REQUIRE ATCT CLEARANCE TO TRAVERSE RUNWAY CENTERLINE / APPROACH

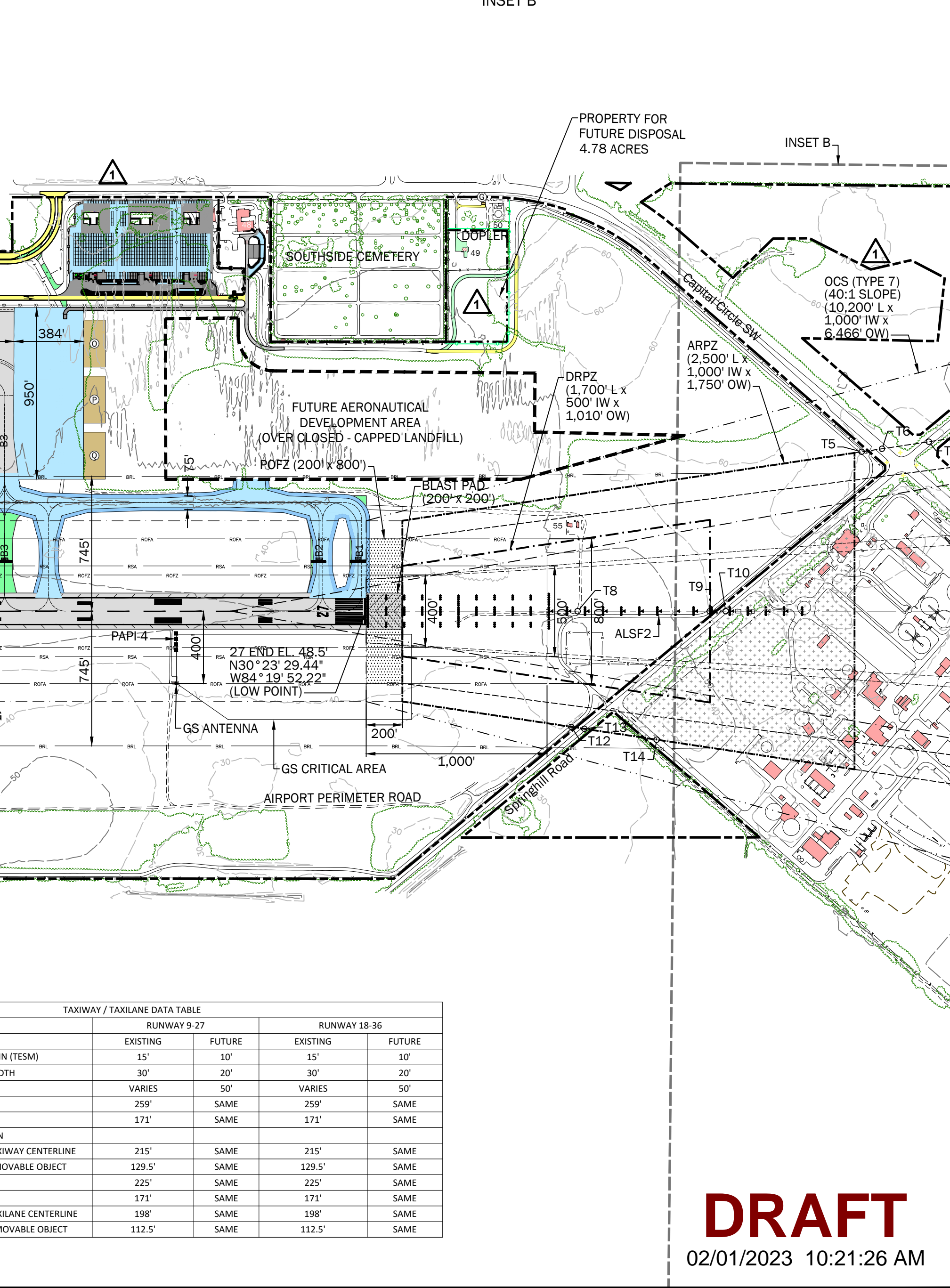
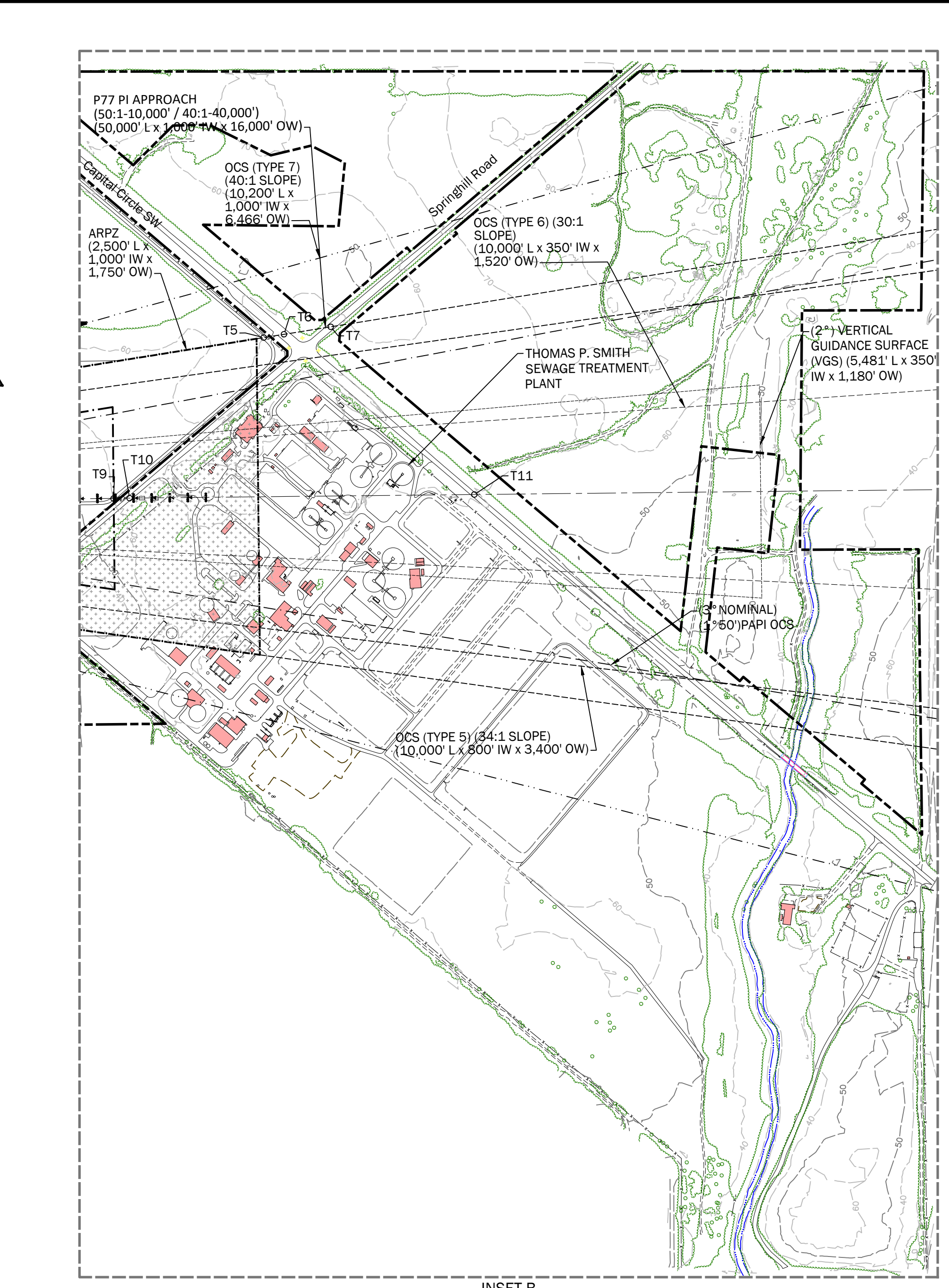
RUNWAY 27 END TRAVERSE WAY TABLE					
ID	DESCRIPTION	OBJECT TOP ELEVATION (MSL)	ALLOWABLE SURFACE ELEVATION (MSL)	PENETRATION	DISPOSITION
T5	PRIVATE ROAD	71.3	99.9	-28.2'	NONE
T6	PUBLIC ROAD	83.3	101.9	-18.2'	NONE
T7	PUBLIC ROAD	78.8	106.7	-27.9'	NONE
T8	PRIVATE ROAD	59.1	67.8	-8.7'	NONE
T9	PRIVATE ROAD	70.2	82.4	-12.4'	NONE
T10	PUBLIC ROAD	78.2	84.2	-6.2'	NONE
T11	PUBLIC ROAD	76.6	122.4	-45.8'	NONE
T12	PRIVATE ROAD	50.0	67.2	-17.1'	NONE
T13	PRIVATE ROAD	52.5	68.6	-16.1'	NONE
T14	PRIVATE ROAD	53.7	76.6	-22.9'	NONE

RUNWAY 36 END TRAVERSE WAY TABLE					
ID	DESCRIPTION	OBJECT TOP ELEVATION (MSL)	ALLOWABLE SURFACE ELEVATION (MSL)	PENETRATION	DISPOSITION
T15	PRIVATE ROAD	74.2	111.9	-37.2'	NONE
T16	PRIVATE ROAD	73.3	111.1	-37.8'	NONE
T17	PRIVATE ROAD	81.0	114.4	-33.4'	NONE

TAXIWAY / TAXILANE DATA TABLE					
TAXIWAY / TAXILANE	RUNWAY 9-27		RUNWAY 36-38		
	EXISTING	FUTURE	EXISTING	FUTURE	
TAXIWAY EDGE SAFETY MARGIN (TESM)	15'	10'	15'	10'	
TAXIWAY SHOULDER WIDTH	30'	20'	30'	20'	
TAXIWAY WIDTH	VARIES	50'	VARIES	50'	
TAXIWAY OFA	250'	SAME	250'	SAME	
TAXIWAY TSA	171'	SAME	171'	SAME	

TAXIWAY SEPARATION					
TAXIWAY CENTERLINE TO PARALLEL TAXIWAY CENTERLINE	EXISTING	FUTURE	EXISTING	FUTURE	DISPOSITION
TAXIWAY CENTERLINE TO FIXED OR MOVABLE OBJECT	215'	SAME	215'	SAME	SAME
TAXIWAY CENTERLINE TO TAXILANE CENTERLINE	129.5'	SAME	129.5'	SAME	SAME
TAXILANE OFA	225'	SAME	225'	SAME	SAME
TAXILANE TSA	171'	SAME	171'	SAME	SAME
TAXILANE CENTERLINE TO PARALLEL TAXILANE CENTERLINE	158'	SAME	158'	SAME	SAME
TAXILANE CENTERLINE TO FIXED OR MOVABLE OBJECT	112.5'	SAME	112.5'	SAME	SAME

RUNWAY 36 END TRAVERSE WAY TABLE					
ID	DESCRIPTION	OBJECT TOP ELEVATION (MSL)	ALLOWABLE SURFACE ELEVATION (MSL)	PENETRATION	DISPOSITION
T18	PRIVATE ROAD	63.1	61.3	1.8'	NONE
T19	PRIVATE ROAD	56.6	61.1	-4.5'	NONE
T20	PRIVATE ROAD	67.0	79.7	-12.7'	NONE
T21	PRIVATE ROAD	63.8	95.2	-31.4'	NONE
T22	PRIVATE ROAD	86.8	95.2	-8.4'	NONE



**Tallahassee International Airport**  
Tallahassee, Florida

**Michael Baker INTERNATIONAL**

Designer: SMS  
Checked by: MLT  
Technician: SMS  
Project Number: 149020

NOTES:

1. BASE MAPPING SOURCE: CAD FILE TLH\_TALLHASSEE.DWG FROM QUANTUM SPATIAL RECEIVED 3-17-2017.
2. THE (NAVD83) VERTICAL CONTROL DATUM WAS USED FOR ALL ELEVATIONS.
3. THE (NAVD83) COORDINATE SYSTEM WAS USED FOR ALL HORIZONTAL LATITUDE AND LONGITUDE COORDINATES.
4. ALL OCS TYPES REFERENCE FEDERAL AVIATION REGULATIONS (FAR) PART 77 THAT SPECIFIES CLEARANCE REQUIREMENTS FOR ROADS, RAILROADS, AND WATERWAYS AS FOLLOWS: A) 17 FEET FOR AN INTERSTATE HIGHWAY, B) 35 FEET FOR ANY OTHER PUBLIC ROADWAY, C) 10 FEET OR THE HEIGHT OF THE HIGHEST MOBILE OBJECT THAT WOULD NORMALLY TRAVERSE THE ROAD, WHICHEVER IS GREATER, FOR A PRIVATE ROAD, D) 23 FEET FOR A RAILROAD, AND E) FOR A WATERWAY OR ANY OTHER TRAVERSE WAY NOT PREVIOUSLY MENTIONED, AN AMOUNT EQUAL TO THE HEIGHT OF THE HIGHEST MOBILE OBJECT THAT WOULD NORMALLY TRAVERSE IT.

PLAN REFERENCED NOTES:

- A. AS SPECIFIED, THE BUILDING RESTRICTION LINE (BRL) HAS BEEN ESTABLISHED TO REMAIN BEYOND AND CLEAR OF ALL RUNWAY PROTECTION ZONES (RPZs), OBSTACLE FREE ZONES (OFZs), OBJECT FREE AREAS (OFAs), NAVAID CRITICAL AREAS, ATCT CLEAR LINE OF SIGHT (LOS), THE LOCATION OF THE BRL IS DEPENDENT UPON THE SELECTED ALLOWABLE STRUCTURE HEIGHT AS REQUIRED TO REMAIN BELOW EXISTING AND PLANNED FUTURE OVERLYING APPLICABLE CFR PART 77 CIVIL AIRPORT IMAGINARY SURFACES AND TERPS-PROTECTED IMAGINARY SURFACES.
- B. EXISTING / FUTURE HOLDING POSITION MARKINGS ARE LOCATED 280' OR MORE FROM RUNWAY CENTERLINES.

FAA DISCLAIMER

THE CONTENTS DO NOT NECESSARILY REFLECT THE OFFICIAL VIEWS OR POLICIES OF THE FAA. THE ACCEPTANCE OF THIS PLAN BY THE FAA DOES NOT IN ANY WAY CONSTITUTE A COMMITMENT ON THE PART OF THE UNITED STATES TO PARTICIPATE IN ANY DEVELOPMENT DEPICTED HEREIN NOR DOES IT INDICATE THAT THE PROPOSED DEVELOPMENT IS ENVIRONMENTALLY ACCEPTABLE IN ACCORDANCE WITH PUBLIC LAWS.

CONSTRUCTION NOTICE REQUIREMENT

TO PROTECT OPERATIONAL SAFETY AND ULTIMATE DEVELOPMENT, ALL PROPOSED CONSTRUCTION ON THE AIRPORT MUST BE COORDINATED BY THE AIRPORT OWNER WITH THE FAA AIRPORTS DISTRICT OFFICE PRIOR TO CONSTRUCTION. PAPI'S REVIEW TAKES APPROXIMATELY 60 DAYS.

**AVCON**

REVISIONS BY: AVCON, INC.

NO.	DESCRIPTION	DATE	BY
1	ADD FOOT R.O.W. UPDATE	6/21/22	MAB
2	ADD PROPOSED QTA/CONRAC FACILITY	6/21/22	MAB
3	ADD PROPOSED IPPF FACILITY	6/21/22	MAB
4	NEW TERMINAL ACCESS ROADS	6/21/22	MAB
5	NEW AIRFIELD GEOMETRY	6/21/22	MAB
6	ADD PHASE 2 ACCESS ROADS	6/21/22	MAB
7	REVISE NORTH DEVELOPMENT AREA	12/09/22	MAB
8	REVISE PROPOSED/EXISTING BUILDING	1/9/23	MAB
9	REVISE CEMETERY EXPANSION AREA	1/9/23	MAB

Project Name: AIRPORT MASTER PLAN UPDATE

Drawing Name: AIRPORT LAYOUT PLAN DRAWING

FAA AIP # / STATE GRANT # 3-12-0077-039-2015 / 422301-49401

Division: PLANNING

Date: JUNE 2019  
Drawing Number: 3

DRAFT 02/01/2023 10:21:26 AM